

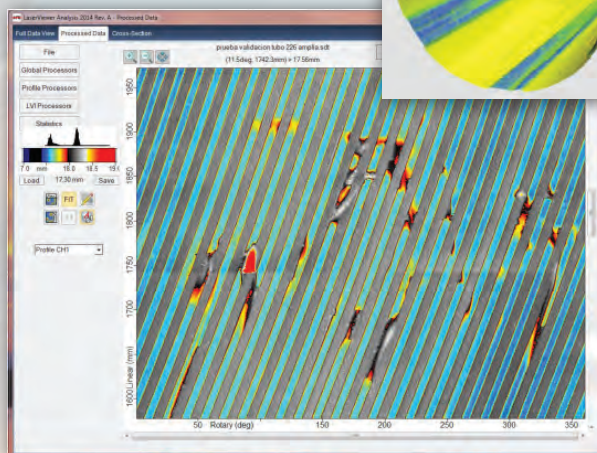
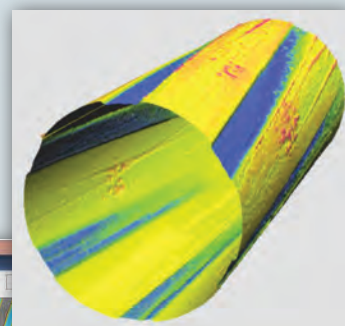
Bore Erosion Measurement and Inspection Services

High-resolution laser-based inspection of gun bores:

Using state-of-the-art BEMIS™ (a product of Laser Techniques Co., Redmond, WA) technology, Chesapeake Testing is offering industry-leading inspection of gun bores:

- Fast automated inspection and processing, providing high-precision, consistent, traceable results *in minutes* – concise and detailed reports provided
- Quantified measurements of internal bore dimensions, including rifling depth and twist rate (both standard & progressive), customized statistical analysis of results
- 3D visualization and analysis of the entire length of the barrel, including precise bore straightness and deflection measurements
- 3D surface measurements – providing point-cloud/surface information in order to compare empirical data direct to the CAD geometry
- High Resolution LaserVideo™, creating camera-like images of the entire inner surface – visualize and measure performance-degrading irregularities such as corrosion, chrome loss, and port erosion.

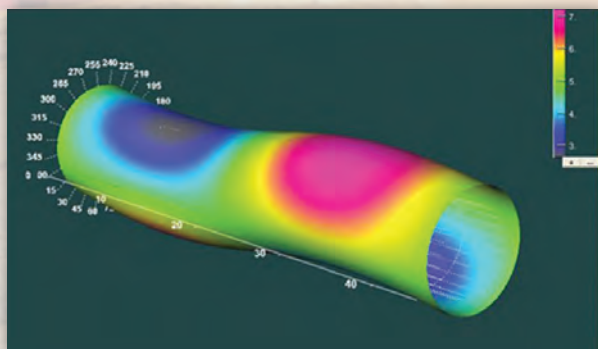
Detailed 3D visualization and surface measurements



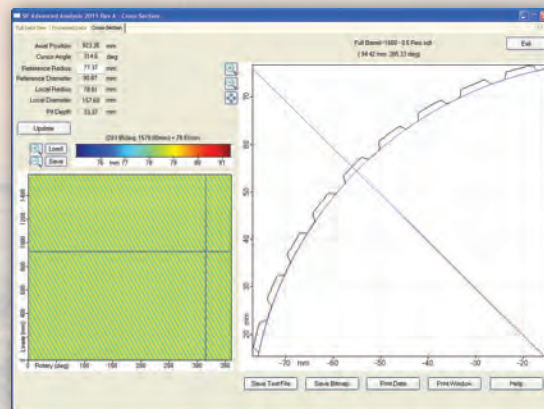
High resolution visualization of performance-degrading irregularities



Scanning probe with precision laser measurement



Accurate bore straightness and deflection measurements



Measurements of rifling at any location within the gun bore with maximum resolution of 0.00025"

Additional weapons systems testing and inspection capabilities



Gun Barrel Testing: Barrel Endurance, Wear/Erosion, and Dispersion Testing



Non-destructive Testing: X-ray, Computed Tomography, Eddy Current, and Magnetic Particle



Weapons Systems Testing: Mechanical Testing, Recoil Comparisons, and Shock Transmittance



About Chesapeake Testing:

Chesapeake Testing provides ballistic experimentation and non-destructive testing services in support of munitions and protection systems research.

From our state-of-the-art laboratory in northeastern Maryland (near Aberdeen Proving Ground), we combine experimental and testing facilities, the latest testing and measurement equipment, and highly experienced personnel to efficiently meet our customer's performance schedule, and cost requirements.

Each of our testing laboratories is led by a team of engineers who have an extensive background in their respective field. These labs which are equipped with some of the most sophisticated and advanced equipment available, are also ISO/IEC 17025:2005 accredited. Chesapeake Testing offers customers a one-stop shop for testing services.



Ammunition Testing: Terminal Performance, Pressure Testing, and Flight Characterization

For more information, please call
Chris Peitsch at (410) 297-8154
email: chris.peitsch@chesapeaketesting.com

A NVLAP and A2LA ISO/IEC 17025:2005 accredited;
NIJ approved laboratory



4603B Compass Point Road | Belcamp, MD 21017
Phone: (410) 297-8154 | Fax: (410) 297-8160
www.chesapeaketesting.com