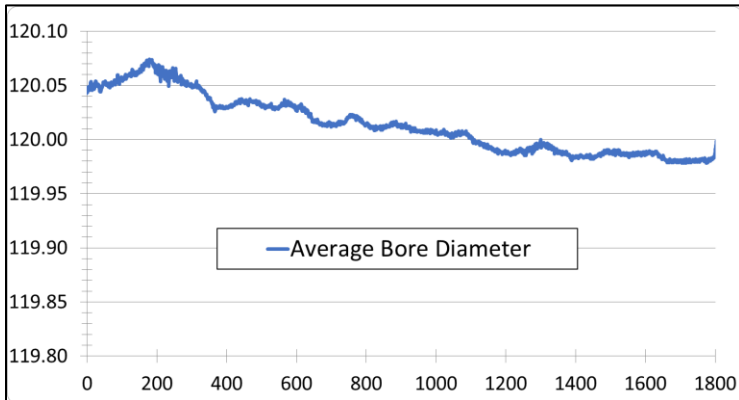


LaserViewer™ Analysis Bore Reporting Module – Smooth Bores

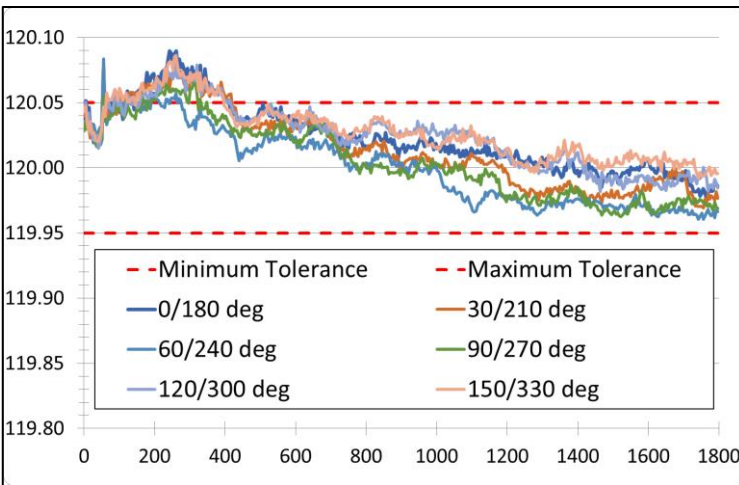


Bore report showing the average bore diameter for a 120mm barrel

Bore Reporting Module – Smooth Bores

(SFW-PC-RPT-S)

- **Create reports** from any BEMIS™ smooth bore data in graphical and tabular formats
- **Tolerancing** available on all outputs
- **Statistics and individual** measurements
- **User configurable** setup files to create consistent reporting in a variety of formats
- **Zone reporting** with user-settable report intervals and pass/fail criteria in each zone



Bore report showing 30° separated diameter measurements with tolerancing for a 120mm barrel

Barrel Setup

Report Type:

Caliber/Model:

Setup File Units:

Measurements:

Bore Diameter: mm

Measurement Spacing: deg

Multiple options available to meet inspection requirements (more available than are shown here)

Statistics						Individual Measurements		
Axial Position	Average Diameter	Maximum Value	Maximum Location	Minimum Value	Minimum Location	0/180 deg	30/210 deg	60/240 deg
0	120.030	120.038	0 & 180	120.013	60 & 240	120.038	120.030	120.013
1	120.031	120.039	0 & 180	120.015	60 & 240	120.039	120.033	120.015
2	120.029	120.038	0 & 180	120.012	60 & 240	120.038	120.028	120.012
3	120.029	120.037	0 & 180	120.013	60 & 240	120.037	120.027	120.013
4	120.029	120.036	120 & 300	120.011	60 & 240	120.035	120.031	120.011
5	120.030	120.038	120 & 300	120.015	60 & 240	120.036	120.030	120.015
6	120.031	120.039	150 & 330	120.015	60 & 240	120.038	120.032	120.015
7	120.030	120.038	120 & 300	120.013	60 & 240	120.037	120.031	120.013
8	120.032	120.041	0 & 180	120.018	60 & 240	120.041	120.036	120.018
9	120.033	120.045	0 & 180	120.017	60 & 240	120.045	120.030	120.017
10	120.034	120.043	150 & 330	120.016	60 & 240	120.043	120.034	120.016
11	120.035	120.049	0 & 180	120.020	60 & 240	120.049	120.033	120.020
12	120.035	120.044	0 & 180	120.024	60 & 240	120.044	120.033	120.024
13	120.038	120.045	0 & 180	120.029	90 & 270	120.045	120.036	120.029
14	120.036	120.049	150 & 330	120.024	60 & 240	120.042	120.033	120.024
15	120.033	120.045	150 & 330	120.020	60 & 240	120.040	120.029	120.020
16	120.037	120.049	120 & 300	120.022	60 & 240	120.041	120.036	120.022
17	120.033	120.043	120 & 300	120.024	90 & 270	120.039	120.030	120.024

Tabular results for bore diameter measurements

Test Details Edit Headings

Operator:

Serial Number:

Number of Rounds:

Measurement Temp.:

Test Program:

Test Director:

Easily add inspection details during setup with configurable headings and comments